

Kingsbridge M.U.D. Newsletter

SPRING | 2017

Time to Bloom

LAST PRINTED ISSUE

For future publications please visit our website at: www.kingsbridgemud.com

WHAT'S INSIDE :

Construction on Sugar Land-Howell
Flood Prevention Progress in Dover
Hurricane Preparedness
What's on the Website
Neighborhood Watch

Let there be Lights

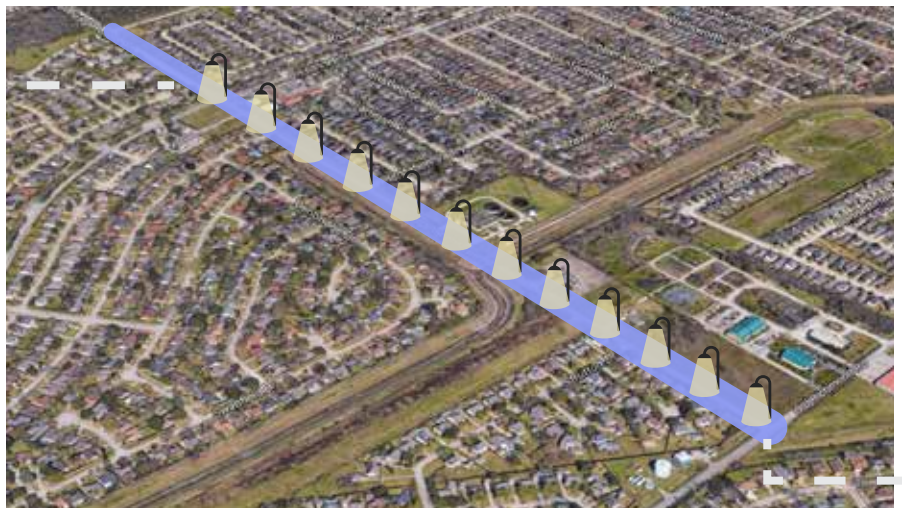
On Sugar Land-Howell Road

Introducing the 12 new lights on Sugar Land- Howell Road. At Kingsbridge MUD, your concerns are also our concerns, especially when it comes to the safety and well being of our residents. The lack of lighting in this area of our district was a safety concern for nearby subdivisions and those commuting to and from work.

Kingsbridge MUD strives to “make a difference” and we are happy to report after hearing from several residents, those 12 additional lights are doing just that.

The success of this light improvement project is the result of two Municipal Utility Districts working together. The project added 4 new lights on the north side of Bissonnet between Bissonnet and Renn Road, as well as the addition of 8 new lights from Bissonnet to Old Richmond Road. The combined effort between Kingsbridge MUD (funding 60%) and Renn Road MUD (funding 40%) not only added 12 new lights; it added safety to an area that was once much darker.

12 additional street lights were added to Sugar Land-Howell Road between Renn Rd. and Old Richmond Rd. through the combined efforts of Kingsbridge MUD and Renn Road MUD



Road Widening

Kingsbridge MUD is happy to announce the widening of Sugar Land-Howell Road. The project is being funded by Fort Bend County through the 2013 Mobility Bond. Kingsbridge MUD will also be funding a portion of the project which will allow for the temporary relocation of the water line. We anticipate the project to make a huge difference when it comes to the safety of those traveling in the area.

Projected to begin summer 2017, the Sugar Land-Howell Road widening project will break ground and begin widening the existing two-lane asphalt road into a three-lane concrete road. We are expecting the project to take approximately 12 months to complete. Construction will begin at Old Richmond and Sugar Land-Howell, working to completion at Bissonnet. The project will

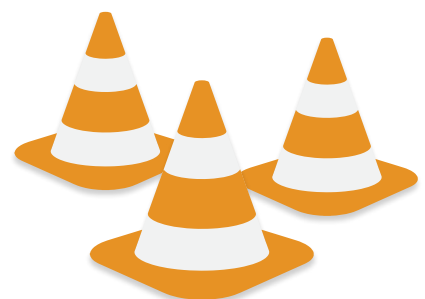
include widening the road as well as rebuilding and widening the existing bridges.

The expansion of Sugar Land-Howell Road will greatly improve safety for our drivers by completely eliminating the roadside ditches and replacing them with a curbed concrete road and an underground drainage system. Mobility and traffic flow will also improve between Bissonnet and Old Richmond Road by providing a left turn lane to allow for safer turns.

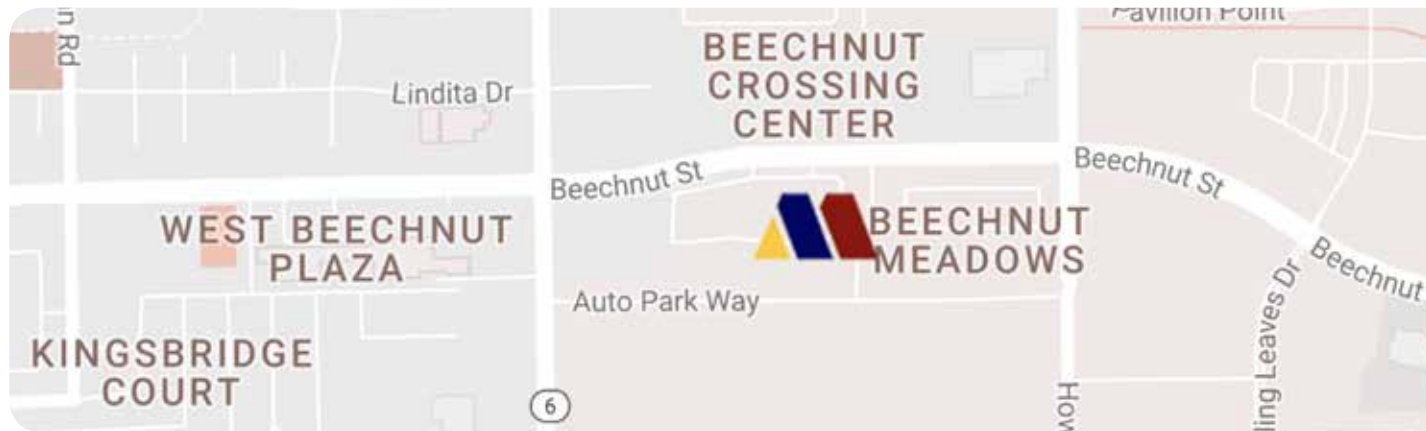
For updates on the Sugar Land-Howell Road Widening project, please visit our website at: www.kingsbridgemud.com



Starting this summer Sugar Land-Howell Rd will be expanded to three lanes between Old Richmond and Bissonnet.



6 Acre Annexation in Progress for Prestigious Mill Offices



A new business park is coming to Kingsbridge MUD and we are excited to share the details with you. Last year Maria and Santo Martinez, owners of Martinez Millwork, requested annexation into the Kingsbridge MUD for the construction of their new office building at 8503 Highway 6 South in Houston, TX.

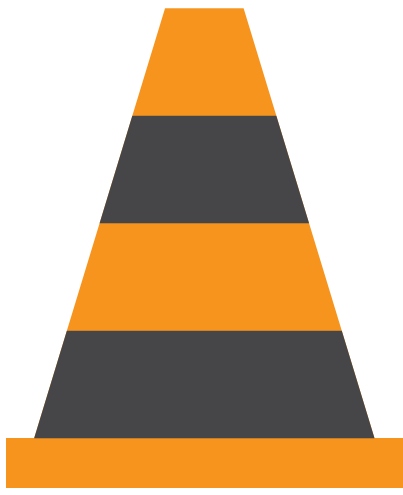
Martinez Millwork, LLC is a company that designs and creates custom woodwork and architectural designs for hospitals and more, a few of their clients include MD Anderson, Toyota Center and Memorial Hermann. Martinez Millwork is currently operating out of 3 separate small buildings in Houston, however, this new office park allows them to merge into one building. The building, once completed, will be approximately 40,000 sq feet and is situated on 6 acres of land giving them plenty of elbow room and space to grow.

So if you are wondering why Martinez Millwork choose this as their new location, Maria Martinez said *“We wanted to accomplish two things by moving our company. The first was that we wanted to consolidate our 3 buildings, and the second was that we wanted to be closer to Highway 6.”*

It certainly looks like they will be able to accomplish their goal. *“We are waiting on annexation but (as a whole) the process has been very easy as the Directors at the Kingsbridge MUD have been very kind and easy to work with.”*

Welcome Martinez Millwork, we cannot wait to see you grow!





Dover storm sewer

At Kingsbridge MUD, we want to make sure we do all we can to keep our residents “in the know.” We are pleased to report the Dover storm sewer project is on schedule and progressing nicely. The Dover neighborhood has been through quite a bit as it relates to flooding and this new storm sewer will provide the relief that Dover residents need.

The project broke ground in December and is projected to take approximately one year, weather permitting. The repairs, which started in the back of the Dover subdivision, are being done in sections. As the construction moves from one section of the neighborhood to the other, yellow door hangers are being placed on the front doors of each home in

the surrounding construction area. These door hangers alert residents the storm sewer lines along their street are going to be removed and replaced in the coming week and they may experience temporary disruptions in water service. Kingsbridge MUD understands this is an extensive project and our goal is to make this process as stress free as possible for our Dover residents.

In addition, you may have noticed the land just outside of the neighborhood on Bissonnet Road and Castlemont Drive is being utilized as the staging yard for the project. This is where all of the supplies and concrete pipes are being shipped and then held until needed. This staging yard is intended to eliminate additional congestion or resident disruption while the project is taking place.



Neighbors

On Alert



Being a good neighbor is more than just a saying, it can mean taking action. You are the eyes and ears of your neighborhood, so when you see something that seems out of the ordinary or strikes you as a bit odd - **call it in!**

Statistically speaking, neighborhoods with residents that look out for one another typically see up to a **16% reduction in crime rates**. We wanted to give you some insight on what residents should be doing to “Stay Alert, Be Proactive and Watch For Suspicious Behavior.” When neighbors look

out for one another, everyone wins. So what can a resident do to be part of the winning solution? Here are some tips on what you can do as a resident when safeguarding your own home as well as some helpful information regarding programs of which you may not be aware.

Vacation Watch

If you plan to take a Vacation in the near future, please call S.E.A.L Security at 713-979-2388. We recommend you notify them at least 72 hours before your vacation begins. Before calling, be prepared to answer several questions from the S.E.A.L Security Officer that will help in safeguarding your property while you are away, such as:

What dates will you be gone?

Will you leave lights on in your home? If so, which lights?

Will you have any vehicles in your driveway? If so, give a description.

Will anyone be coming and going at your home while you're gone?

If so, when? Who?

Where will you be traveling and how can you be reached while you are away?



S.E.A.L Security
Vacation Watch
713-979-2388



S.E.A.L Security
Suspicious Activity
713-766-1600



The background of the page features a blurred image of a smartphone screen displaying the Kingsbridge Municipal logo, which includes a stylized blue house icon and the text 'KINGSBRIDGE MUNICIPAL'. To the right, a green plant with broad leaves is growing in a clear glass vase. The overall aesthetic is clean and modern.

What's on the website and why should I visit

At Kingsbridge MUD, we know communication is important and want our residents to be “in the know” at all times. We want to provide our residents with a place to stay connected and stay informed. Our website was designed to be a constant source of information, plus so much more!

The website provides you access to emergency alerts, district improvements, helpful water related stories, meeting documents and a new addition, the quarterly Kingsbridge MUD newsletters. As technology shifts, we decided our newsletters should be viewed on our website vs. mailing to each home. This will save the district time and money for printing, while keeping our residents informed. This will be the last mailed newsletter. We invite and encourage you to go to our website and download or view our future Newsletters in their entirety.

Visit:
www.kingsbridgemud.com

For evacuation routes check TxDOT for an update evacuation map at:

www.txdot.gov/inside-txdot/division/traffic/safety/weather/hurricane.html

are you hurricane prepared?

HURRICANE SEASON begins June 1.

To be prepared, it is important not only understanding how hurricanes are categorized but also understand what steps to take as they approach.

When we refer to a Hurricane in terms of a category, it's helpful to know where that comes from. The Saffir-Simpson Hurricane Wind Scale is a 1 to 5 rating based on a hurricane's sustained wind speed. This scale estimates potential property damage. Hurricanes reaching Category 3 and higher are

considered major hurricanes because of their potential for significant loss of life and damage. Category 1 and 2 storms are still dangerous and require preventative measures.

Hurricane Watch = Conditions possible within 48 hrs.

Hurricane Warning = Conditions expected within 36 hrs.

**Hourly Hurricane
Prep Steps**



HURRICANE CATEGORIES

1 74-95 mph

Homes could have damage to roof, shingles, and gutters. Large branches of trees will snap and shallowly rooted trees may be toppled. Extensive damage to power lines and poles likely will result in power outages.

2 96-110 mph

Homes could sustain major roof and siding damage. Shallowly rooted trees will be snapped or uprooted and block numerous roads. Near-total power loss is expected with outages that could last weeks.

3 (major) 111-129 mph

Homes may incur major damage or removal of roof decking and gable ends. Many trees will be snapped or uprooted, blocking numerous roads. Electricity and water will be unavailable for several days to weeks after the storm passes.

4 (major) 130-156 mph

Well-built homes can sustain severe damage with loss of most of the roof structure and/or some exterior walls. Most trees will be snapped or uprooted and power poles downed. Power outages will last weeks to possibly months. Most of the area will be uninhabitable for weeks or months.

5 (major) 157 mph and higher

A high percentage of framed homes will be destroyed, with total roof failure and wall collapse. Fallen trees and power poles will isolate residential areas. Power outages will last for possibly months.

National Hurricane Center - <http://www.nhc.noaa.gov/aboutsshws.php>

A Hurricane is 36 Hours from arriving:

Build or restock your emergency preparedness kit, include a flashlight, batteries, cash and first aid supplies. Plan to communicate with family members if you lose power. Remember that during disasters, sending text messages is usually reliable and faster than making phone calls because phone lines are often overloaded. Keep your car in good working condition, and keep the gas tank full; stock your vehicle with emergency supplies and a change of clothes.

A Hurricane is 18-36 Hours from arriving:

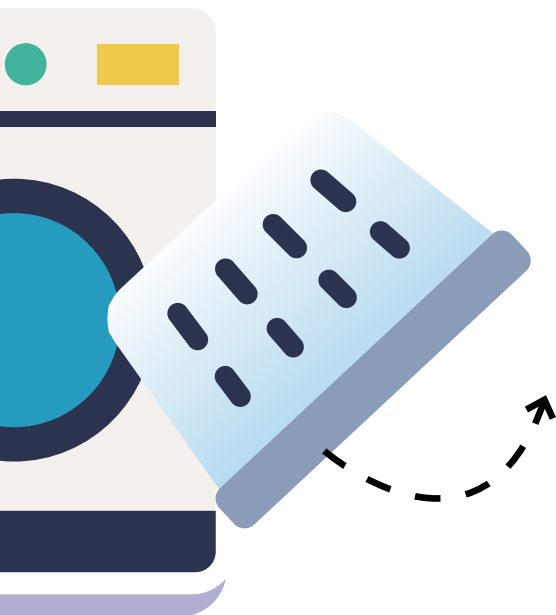
Bring loose, lightweight objects inside that could become projectiles in high winds (e.g., patio furniture, garbage cans). Anchor objects that would be unsafe to bring inside (e.g., propane tanks) and trim or remove trees close enough to fall on the building. Cover all your home's windows. Permanent storm shutters offer the best protection for windows, or board up windows with $\frac{5}{8}$ " exterior grade or marine plywood, cut to fit and ready to install.

A Hurricane is 6-18 Hours from arriving:

Turn on your TV/Radio, or check your city/county website every 30 minutes in order to get the latest weather updates and emergency instructions. Charge your cell phone now so you will have a full battery in case you lose power.

A Hurricane is 6 hours from arriving:

If you're not in an area that is recommended for evacuation, plan to stay at home or where you are and let friends and family know where you are. Stay away from windows. Flying glass from broken windows could injure you. Turn your refrigerator or freezer to the coldest setting and open only when necessary. If you lose power, food will last longer. Keep a thermometer in the refrigerator to be able to check the food temperature when the power is restored. Turn on your TV/radio to check your city/county website every 30 minutes in order to get the latest weather updates and emergency instructions.



Is Losing Money in the Laundry Room Making You A **BASKET CASE?**

When it comes to your laundry, we may not be able to help you solve the “Mystery of the Missing Socks.” But we can help you find where some of your missing money and water is going... down the drain. Your washing machine is one of the thirstiest appliances in your home and depending upon how old your workhorse is, you might realize significant savings in the long run (with both water and energy usage) if you replace them or even just adopt some time and money saving practices.



DID YOU KNOW the washing machine is the second largest water user in your home? The washing machine accounts for as much as 22% of your total residential water use. In addition, most of the front loading high-efficiency (HE) washers on the market today require only 27 gallons or less per load. A conventional washer from 1980-1990 uses around 56 gallons of water per load. That’s an average savings of about 50%! So with today’s technology, combined with efficient use practices you can really make a difference.

TIPS

Run Full Loads Only - Run only full loads. Every time your washer is used, you are consuming water. Consolidating washes and eliminating small loads will save you on usage.



Avoid Using Hot Water - Turning cold water into hot water is the most energy-intensive part of your laundry process. Using warm/cold water will help you save on energy costs.



Use Minimum Load Setting - When you are running a small load occasionally, utilize the “Small Load” option or setting. Doing this will use less water as it’s washing fewer items.



Skip the Extra Rinse Cycle - Many washers have an extra rinse cycle. You can save water by skipping this cycle. The trick here is to use the right amount of detergent so an extra rinse isn’t necessary.



NUMBERS TO KNOW

FOR EMERGENCY:

Sheriff's Office, Fire, Ambulance	911
Fort Bend County Sheriff's Office: (Non-Emergency)	281-341-4665
S.E.A.L. Security:	
-Non-Emergency	713-766-1600
-Vacation Watch	713-979-2388
Fort Bend Office of Emergency Management	281-342-6185
Hospitals:	
-CHI St. Luke's - Sugar Land Hospital	281-985-7600
-Emerus Emergency Hospital	281-277-0911
-Houston Methodist Sugar Land Hospital	281-274-7000
-Kindred Hospital Sugar Land	281-275-6000
-Memorial Hermann Sugar Land Hospital	281-725-5000
-Memorial Hermann Surgical Hospital First Colony	281-243-1000
-Oak Bend Hospital for Surgical Excellence	281-238-3900
-West Houston Medical Center	281-558-3444
-Child Advocates of Fort Bend	281-341-9955
-Poison Control Center	800-222-1222
Utilities and Service Numbers	
-Si Environmental (Water/Sewer)	832-490-1600
-Best Trash Service	281-313-2378
-AT&T Telephone Company (Billing/Repair/U-Verse)	800-288-2020
-Comcast (Billing & Service)	800-266-2278
Energy Company	
-Centerpoint Energy (electric)	800-332-7143
-Centerpoint Energy (gas)	713-659-2111
-Lone Star 811, Dig Safe Texas (Underground Digging Gas, Electric, Phone)	811 or 713-432-0365
Post Offices:	
-USPS	800-275-8777
-Ace Postal	281-240-7678
Miscellaneous:	
-Animal Control	281-342-1512
-Texas Parks & Wildlife	281-931-6471
-Auto License/Registration	281-341-3709



Safeguarding at Home

- Keep garage doors closed
- Lock your windows
- Lock your car doors
- Collapse all boxes placed curbside for trash pick up, making them indistinguishable This eliminates a glimpse into recently purchased contents for your home (ex big screen TV box)
- Keep valuables in your car hidden or remove whenever possible
- Reconsider where you "hide" your front door key, avoiding typical places (under the mat, above the door, under the potted plant, etc)



Board of Directors :

President
Robert Shindler

Vice President
John Buhner

Secretary
Juanita Yarneau

Treasurer/Investment Officer
Carl Peters

Assistant Secretary
John Pertgen

Consultants :

Attorney
Johnson Petrov LLP
johnsonpetrov.com 713-489-8977

Operator
Si Environmental
sienv.com 832-490-1600

Engineer
Miller & Associates 713-977-4700

Bookkeeper
McLennan & Assoc. 281-920-4000

Tax Assessor
Bob Leared Interests
bli-tax.com 713-932-9011

Communications
Triton Consulting Group
tritoncg.com 281-766-4276

Other Contacts :

Trash Pickup
Best Trash 281-313-2378

Water Leaks
Si Environmental 832-945-1531

Gas Leaks
Centerpoint Energy 800-752-8036

Sheriff's Office
Fort Bend 281-342-6116

District Security Patrol
S.E.A.L. Security 713-766-1600